



FREEMANTLE 2146 Freemantle Road *Weiry's Corner – Exceptional Country Living*

New South Wales Sotheby's is delighted to welcome Weiry's Corner to the market, a quality rural holding that is ready and set-up for its new owner. Comprising approx. 261 acres (106ha) of undulating grazing country with sealed road access directly to the front gate.

Located just 30 minutes from the Bathurst Town Centre and 45 minutes from Orange Airport with daily flights, Weiry's Corner provides you with the perfect blend of rural and country living. This offering boasts over 800m of frontage to the Macquarie River, complimented by an additional 175,000 litres of water storage on the property.

The master-built home, constructed in 2015, comprises of five spacious bedrooms and four bathrooms is positioned in a north-east facing position with sweeping views of the surrounding countryside.

Equipped to handle stock, the property is well irrigated with six dams connecting 13 fully fenced paddocks via 100mm underground waterlines ensuring water security. The all-weather cattle yards equipped with crush will make stock handling a breeze. The property is currently carrying 60 cows.

Presented in first class order and ready to meet the market, Weiry's Corner is an outstanding country lifestyle property whilst still benefiting from all the services and close proximity that Bathurst and Orange has to offer, yet only three hours from Sydney.

5 4 2

Auction

Wednesday 5th April 2023 – 5:00PM

Cooley's Auction House

Level 1/29-33 Bay St

Double Bay NSW 2028

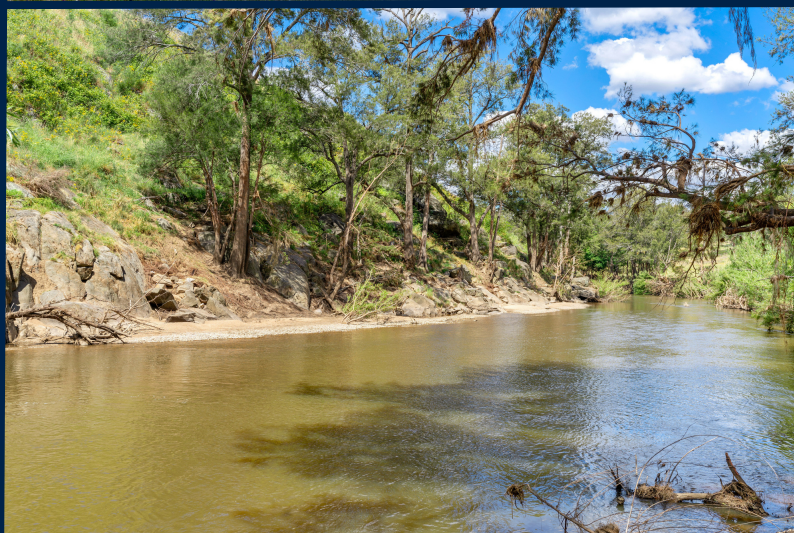


David Medina
0419 772 233



James McCowan
0418 800 400





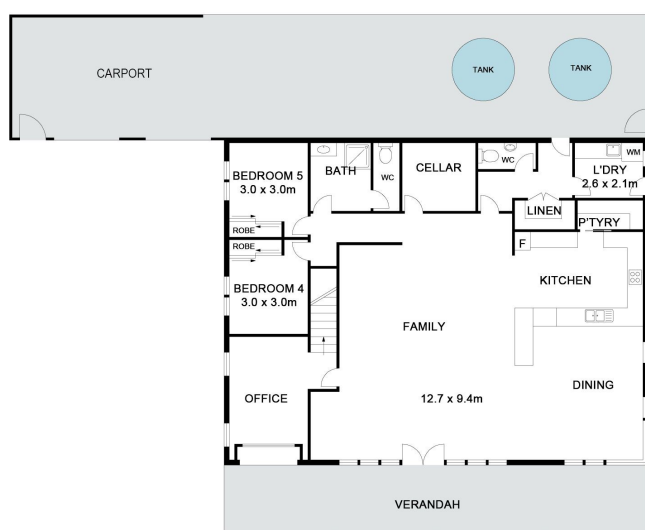
Byron Bay & NSW
Sotheby's International
Realty YouTube



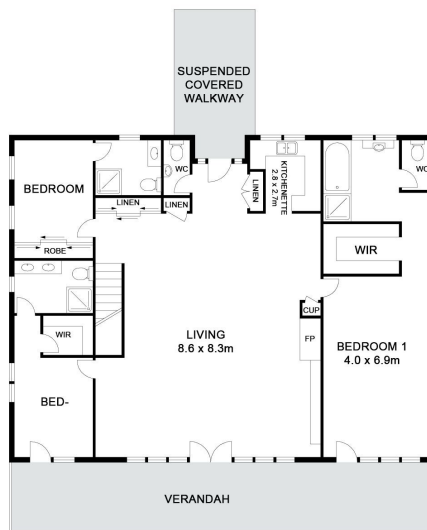
Byron Bay Sotheby's
International Realty
Facebook



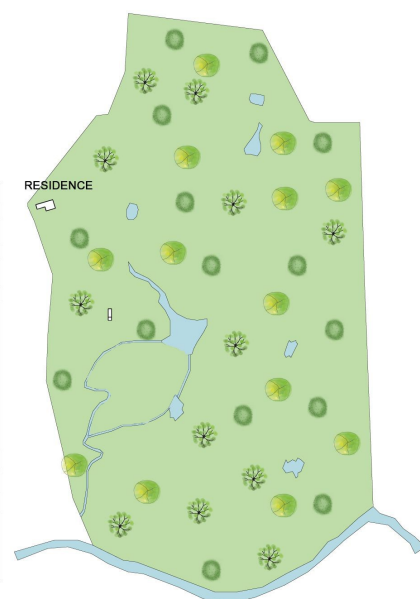
Byron Bay Sotheby's
International Realty
Instagram



GROUND FLOOR

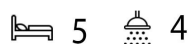


FIRST FLOOR



SITE PLAN
(NOT TO SCALE)

FREEMANTLE
2146 Freemantle Rd



Sotheby's

Scale in metres. Indicative only. All information contained herein is obtained from sources we believe to be accurate. We cannot guarantee its accuracy. Interested persons should make and rely on their own enquiries. This plan is a representation of the buildings on site and not an indication of council approval. Floorplan as illustration only - all figured dimensions approximate - do not scale - no liability accepted.