



SAPPHIRE BEACH 42 Coachmans Close 'Grandeur Exemplified'

Imagine a life of unmatched elegance and unrivaled luxury at 42 Coachmans Close, the crown jewel nestled in an esteemed locale. This exquisite property is more than just a residence—it's an experience in opulence, masterfully crafted to deliver a lifestyle straight out of a dream. At its heart lies the magnificent main residence, accompanied by two standalone, luxuriously appointed villas. Together, they house 15 plush bedrooms and 15 impeccable bathrooms, each a haven of tranquility and style.

This estate encapsulates the epitome of sophistication, offering amenities tailored for the discerning homeowner. Revel in the luxury of ample space for your car collection, the privilege of working from a state-of-the-art home office, and the joy of hosting in grand, versatile spaces that transform according to your needs. Whether you're raising a toast at the private bar or hosting lavish parties that blend seamlessly into the enchanting outdoors, each moment is an unforgettable celebration.

Stepping outside, you are greeted by a paradise tailor-made for every age and interest. The sprawling 25m lap pool calls for invigorating swims, while the children's playground sparks joy and imagination. The crowning glory is your private beach, an idyllic retreat where each sunrise invites new possibilities and each sunset wraps the day in a blanket of tranquility.

The pièce de résistance is the second-level balcony, your exclusive observatory to a world of breathtaking panoramas. This balcony is your private sanctuary to savor a morning coffee with sunrise views, a novel in the gentle afternoon breeze, or star-studded conversations under the twilight sky. At 42 Coachmans Close, every day is a celebration of unparalleled luxury, grandeur,

🛏 15 🛁 15 🚗 7

Auction

Private Auction
Contact Agent for Details



James McCowan
0418 800 400



David Medina
0419 772 233



Byron Bay Sotheby's
International Realty
Website





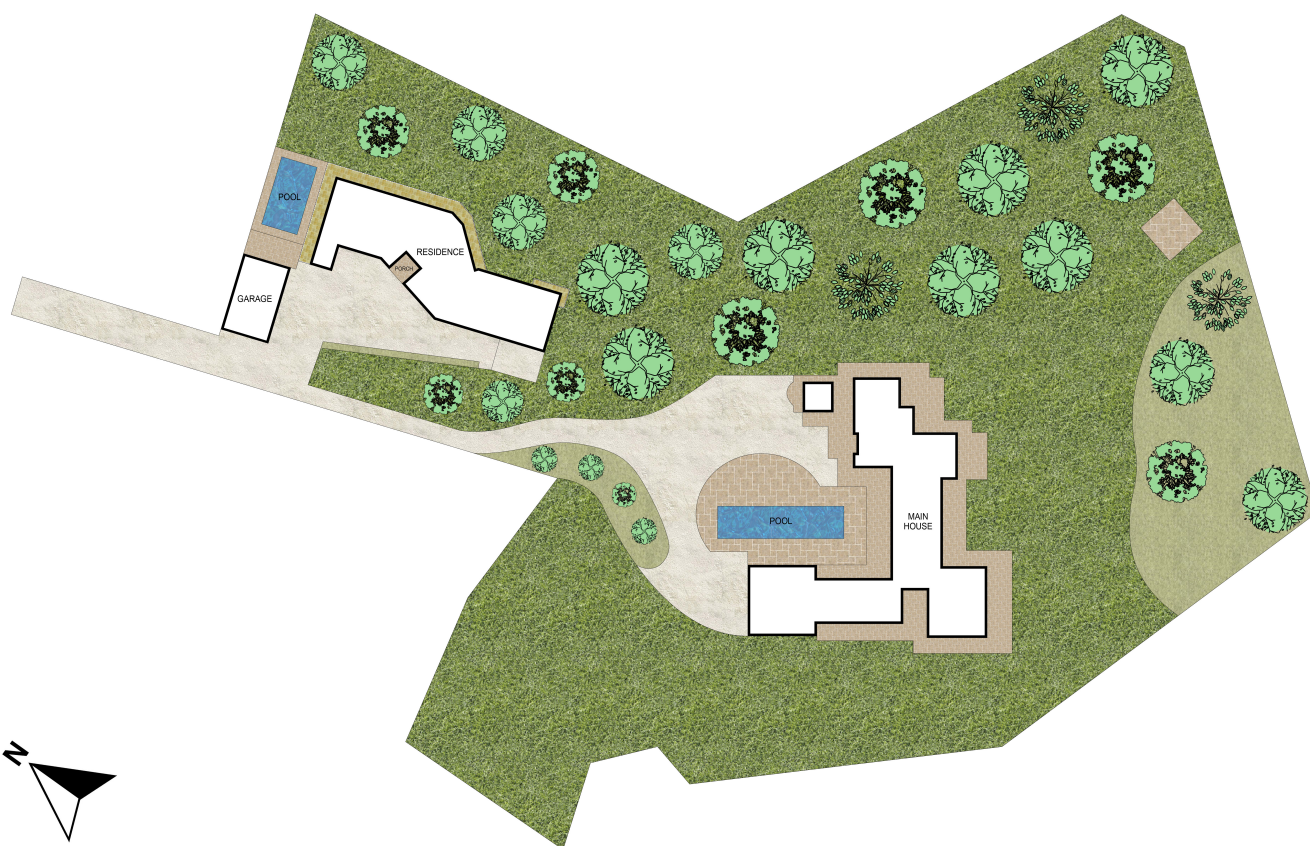
Byron Bay & NSW
Sotheby's International
Realty YouTube



Byron Bay Sotheby's
International Realty
Facebook

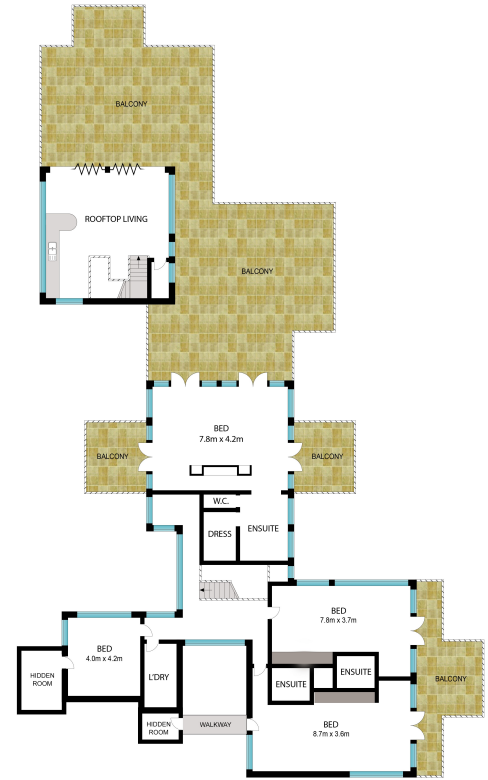


Byron Bay Sotheby's
International Realty
Instagram



Scale in metres. Indicative only. Dimensions are approximate. All information contained herein is gathered from sources we believe to be reliable. However, we cannot guarantee its accuracy and interested persons should rely on their own enquiries.

42 Coachmans Close, Korora



INT: 718 m²
EXT: 680 m²

Scale in metres. Indicative only. Dimensions are approximate. All information contained herein is gathered from sources we believe to be reliable. However, we cannot guarantee its accuracy and interested persons should rely on their own enquiries.



INT: 720 m²
EXT: 100 m²



0 1 2 3 4 5

Scale in metres. Indicative only. Dimensions are approximate. All information contained herein is gathered from sources we believe to be reliable. However, we cannot guarantee its accuracy and interested persons should rely on their own enquiries.