

**DUNGOG****381 Sugarloaf Road****'School Hill - Luxury Country Living'**

School Hill is a modern yet classic homestead providing luxury country living and is set on 8.14 acres (3.293Ha) of rolling hills in a sunny, tranquil and quiet cattle grazing valley approximately 6kms from the Dungog township.

The 4-bedroom, 2.5-bathroom home features an incredibly beautiful and unique open plan kitchen, dining and living areas with large timber poles, fireplace, cathedral ceilings and a wraparound deck at the entrance to an undercover outdoor entertaining area and salt water in-ground pool.

Other features include 2 courtyards, picturesque views from all windows, commanding views of Cook's Pinnacle to the west, mains power, timber floors, dam, 50,000 litres of water storage, double carport, side shed, pool storage closet, under house storage previously used as a cellar and a stable for the horses.

School Hill presents a wonderful opportunity for those seeking luxury country living in a peaceful location within minutes to Dungog, 49 minutes from Maitland, 1 hour 15 minutes to Newcastle and approximately 2 hours and 40 minutes from Sydney. Close to Barrington Tops, Chichester Dam and the Hunter Valley Vineyards.

School Hill is like no other homestead in the area and will not disappoint.

4 2 2

Auction**Monday 5th June 2023 - 5:00PM**

Double Bay Auction House

Level 1/29-33 Bay St

Double Bay NSW 2028



Annette Pinkerton
0400 935 435



David Medina
0419 772 233



Byron Bay Sotheby's
International Realty
Website





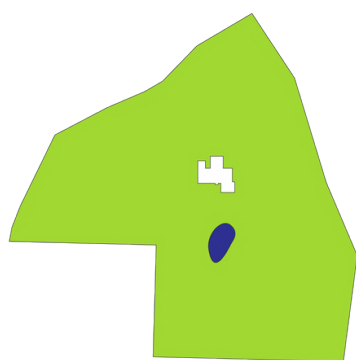
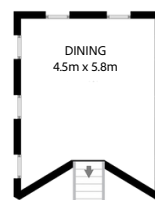
Byron Bay & NSW
Sotheby's International
Realty YouTube



Byron Bay Sotheby's
International Realty
Facebook



Byron Bay Sotheby's
International Realty
Instagram



Site Layout



IMPORTANT INFORMATION

Dimensions & Areas are a guide and approximate only
Direction of North is an Indication Only
Site layout is for illustration only and this is "Not a Survey Plan"

